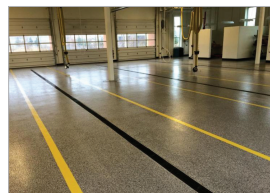
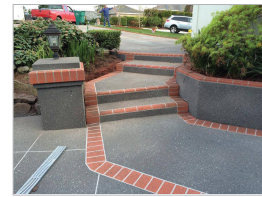


2018 Digital Catalog

Products, Systems, & Solutions for:

Decorative Concrete Finishes • Concrete Restoration
Interior Flooring Systems • Industrial Floor Coatings



elite crete systems

Even in today's unstable economic times, the unique industry that we are leading is continuing to thrive. Our industry is so diverse that it is often said that it is near recession proof due to the versatility of our products & systems and where they can be used.

To better understand that scope of work that our products are used in we will detail the descriptions and use of each in two very distinctive CSI (Construction Specification Institute) Divisions:

CSI Division 3 – Concrete:

- Decorative Concrete Finishes
- Concrete Surface Restoration
- Colored & Stained Concrete
- Concrete Topping and Resurfacing
- Concrete Sealers & Protective Topcoats

CSI Division 9 – Finishes:

- Fluid Applied Floor Coatings
- Resinous Flooring
- Epoxy/Urethane/Polyaspartic
- Customized, Beautiful, Seamless Floors
- Industrial & Manufacturing Floors

Advanced technologies in polymer modified cementitious coatings, reactive/antiquing stain products, super smooth & seamless floor coatings, ultra durable sealer and industrial coating options are leading the growth where full depth stamped concrete, colored concrete, terrazzo, tile, hardwood and other floor coating products were once the extent of the exterior and interior surface options.

As the leader in *decorative concrete, interior flooring and industrial coating industry*, we not only have one of the most extensive product lines but we are also proud to boast one of the most well-known, installed, specified and accepted line of products and systems in the industry.

From one company to another, we understand the importance of time as it relates to profitability. Since product costs are generally fixed and extremely minimal in the decorative concrete finishes and interior flooring industry, when you lose time, you lose money. That's why we continually strive to engineer products and systems that meet and exceed the highest standards of reliability, ease of use, durability and cost effectiveness.

Once you have reviewed all of the enclosed information, give us a call to arrange your training seminar, receive a full product catalog USB Drive or get answers to any questions that you might have. We also urge you to visit our website at www.elitecrete.com which provides much more detailed information.

Finally, take a few minutes and visit our completely interactive discussion forum at www.concretelocator.com, where you can ask questions about training, profitability, design ideas and more from real contractors that install these products every day.

Kindest Regards,

Technical Engineering & Market Development Staff
Elite Crete Systems, Inc.

REFLECTOR™ Enhancer

Flooring System



CSI Division 9: Finishes - Flooring

elite crete systems

Engineered High Performance Surfaces & Flooring

REFLECTOR™ Enhancer Flooring Systems

are specialty, high build, self leveling, fluid applied floor coatings. Engineered for residential and commercial applications where a durable, long lasting, aesthetically unique, easy to maintain and completely custom floor is required.

Due to the unique and unrepeatable nature of these flooring systems, consult with a technical representative before installing or specifying.

TYPICAL AREAS OF USE

- Retail stores
- Shopping malls
- Automobile showrooms
- Restaurants & bars
- Hotels & casinos
- Art galleries & museums
- Collegiate & professional sports complexes

ADVANTAGES

- Ease of maintenance
- Aesthetic improvements
- Hard and abrasion resistant
- VOC free - CA 01350 air quality compliant
- Stain and chemical resistant
- Anti-microbial
- Satin or gloss finish
- Fast set available for quicker turn around time
- Special colors can match design or preferred colors

SPECIFICATION OVERVIEW

- Name: REFLECTOR™ Enhancer Flooring System
- Finish: Gloss or satin
- Cured thickness: @ 40 to 65 mils
- Surface preparation and detailed application instructions per manufacturer
- Manufacturer: Elite Crete Systems, Inc. +1-219-465-7671

SAMPLE COLOR CHART



NOTE: The colors depicted on this technical document may not illustrate the exact color. Contact a technical support representative for a more accurate color sample. Custom colors available upon request.

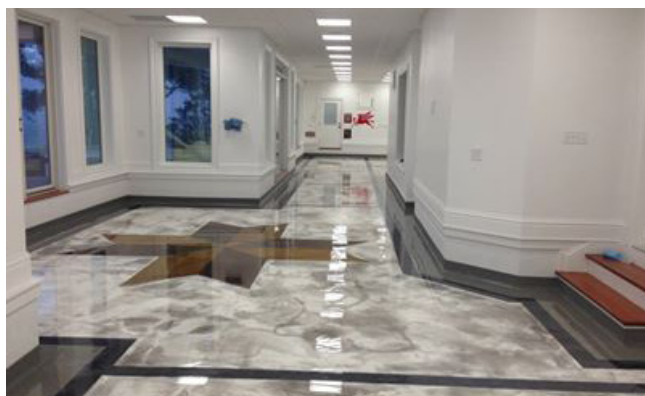
PHYSICAL PROPERTIES

(@ 73°F / 23°C, 7 day ambient cure as a coating)

PROPERTY	TEST	RESULT
VOC Content	N/A	0 g/l
Shore D Hardness	ASTM D-2240	82
Water Absorption (2hr boil)	ASTM D-570	0.03 %
Toxicity	N/A	None*
Heat Distortion Temperature	ASTM D-648	130 F / 55 C
Compressive Strength	ASTM D-695	12,400 psi
Tensile Strength	ASTM D-638	3,400 psi
Flexural Strength	ASTM D-790	4,300 psi
Abrasion Resistance **	ASTM D-4060	4 mg loss
Slant Shear	ASTM C-882	100% concrete failure
Flammability	ASTM D-635	Self-extinguishing
Flame Spread Rate (NFPA 101)	ASTM E-84	Class A
Elongation at Break	ASTM D-638	6.1 %
Perm Rating	ASTM E-96-13	>0.10 @ 16 mils. Class 1
Chemical Resistance	Contact technical representative for chart	
Coefficient of Friction	Adjusted per requirement. Generally 0.50 to 0.80	
COF Guidelines:	ADA Flat Surfaces	0.60
	ADA Inclined Surfaces	0.80
	OSHA	0.50
	NFPA	0.68

* FDA & USDA Acceptable

** CS-17 Wheel, 1 KG load, 1,000 cycles



elite crete systems

Elite Crete Systems, Inc.

1061 Transport Drive
Valparaiso, Indiana 46383

Phone: +1.219.465.7671

Fax: +1.219.531.0898

Toll Free: 888-323-4445

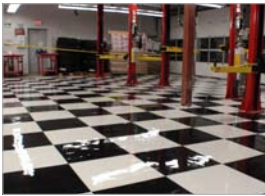
Email: info@elitecrete.com

www.elitecrete.com

The information herein is general information to assist our customers in determining whether our products are suitable for their specific applications. Our products are intended for sale to commercial and industrial customers. We require that customers should inspect and test our products before use to satisfy themselves as to the content and suitability for the applications they intend to use our products for. Nothing herein shall constitute any warranty expressed or implied, including any warranty of merchantability or fitness for a particular purpose, nor is replacement of our materials and in no event shall we be liable for incidental or consequential damages.

HERMETIC™ Neat

Flooring System



CSI Division 9: Finishes - Flooring

elite crete systems

Engineered High Performance Surfaces & Flooring

HERMETIC™ Neat Floor is a high build, self leveling, clear or pigmented resinous flooring system engineered for industrial applications.

TYPICAL AREAS OF USE

HERMETIC™ Neat Flooring Systems is intended for floors subject to medium to high foot traffic, fork lift and rubber wheel carts.

Typical uses include:

- Warehouses
- Manufacturing areas
- Laboratories & clean rooms
- Automobile service areas & garages
- Exhibition halls
- Medical & educational facilities
- Aircraft hangars

ADVANTAGES

- Ease of maintenance
- Protects the substrate
- Aesthetic improvements
- Increases the strength of the substrate
- Hard and abrasion resistant
- VOC free - CA 01350 air quality compliant
- Stain and chemical resistant
- Anti-microbial
- Satin or gloss finish
- Fast set available for quicker turn around time
- Electrostatic dissipative finish is optional

SPECIFICATION OVERVIEW

- Name: HERMETIC™ Neat Floor
- Finish: Gloss or satin
- Cured thickness: @ 40 to 65 mils
- Surface preparation and detailed application instructions per manufacturer
- Manufacturer: Elite Crete Systems, Inc. +1-219-465-7671

SAMPLE COLOR CHART



NOTE: The colors depicted on this technical document may not illustrate the exact color. Contact a technical support representative for a more accurate color sample. Custom colors available upon request. * Novalac Only

PHYSICAL PROPERTIES

(@ 73°F / 23°C, 7 day ambient cure as a coating)

PROPERTY	TEST	RESULT
VOC Content	N/A	0 g/l
Shore D Hardness	ASTM D-2240	80
Water Absorption (2hr boil)	ASTM D-570	0.03 %
Toxicity	N/A	None*
Heat Distortion Temperature	ASTM D-648	130 F / 55 C
Compressive Strength	ASTM D-695	12,300 psi
Tensile Strength	ASTM D-638	3,200 psi
Flexural Strength	ASTM D-790	4,800 psi
Abrasion Resistance **	ASTM D-4060	9 mg loss
Slant Shear	ASTM C-882	100% concrete failure
Flammability	ASTM D-635	Self-extinguishing
Flame Spread Rate (NFPA 101)	ASTM E-84	Class A
Elongation at Break	ASTM D-638	6.5 %
Perm Rating	ASTM E-96-13	>0.10 @ 16 mils. Class 1
Chemical resistance	Contact technical representative for chart	
Coefficient of Friction	Adjusted per requirement. Generally 0.50 to 0.80	
COF Guidelines:	ADA Flat Surfaces	0.60
	ADA Inclined Surfaces	0.80
	OSHA	0.50
	NFPA	0.68

* FDA & USDA Acceptable

** CS-17 Wheel, 1 KG load, 1,000 cycles



elite crete systems

Elite Crete Systems, Inc.

1061 Transport Drive
Valparaiso, Indiana 46383

Phone: +1.219.465.7671 Fax: +1.219.531.0898

Toll Free: 888-323-4445

Email: info@elitecrete.com

www.elitecrete.com

The information herein is general information to assist our customers in determining whether our products are suitable for their specific applications. Our products are intended for sale to commercial and industrial customers. We require that customers should inspect and test our products before use to satisfy themselves as to the content and suitability for the applications they intend to use our products for. Nothing herein shall constitute any warranty expressed or implied, including any warranty of merchantability or fitness for a particular purpose, nor is replacement of our materials and in no event shall we be liable for incidental or consequential damages.

HERMETIC™ Flake

Flooring System



CSI Division 9: Finishes - Flooring

elite crete systems

Engineered High Performance Surfaces & Flooring

HERMETIC™ Flake Floor is a durable, seamless, chemical resistant floor providing adjustable levels of slight texture and color to match any design theme or surroundings.

TYPICAL AREAS OF USE

- Public areas
- Grocery stores
- Airports
- Showrooms
- Retail
- Theme parks
- Hospitality
- Hospitals
- Educational
- Automobile showrooms

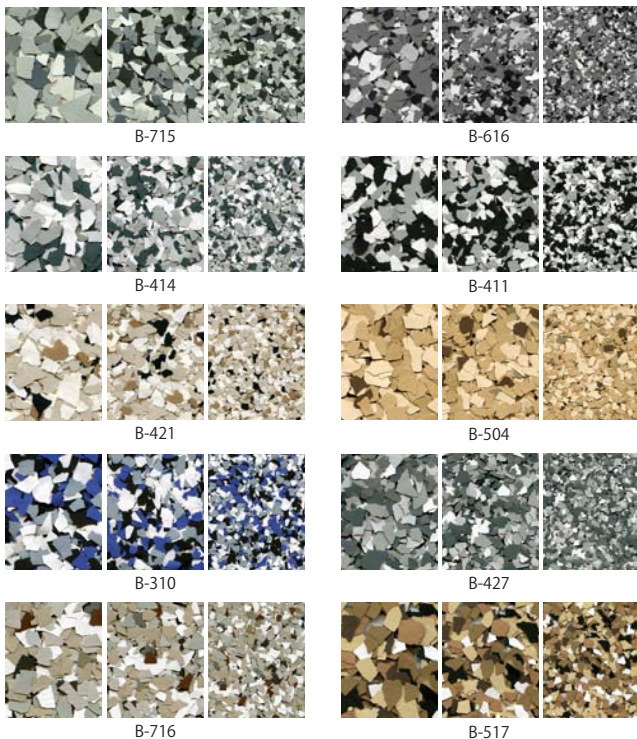
ADVANTAGES

- Ease of maintenance
- Aesthetic improvements
- Hygienic seamless finish
- Hard and abrasion resistant
- VOC free - CA 01350 air quality compliant
- Stain and chemical resistant
- Anti-microbial
- Satin or gloss finish
- Fast set available for quicker turn around time

SPECIFICATION OVERVIEW

- Name: HERMETIC™ Flake Floor
- Surface preparation and detailed application instructions per manufacturer
- Manufacturer: Elite Crete Systems, Inc. +1-219-465-7671

SAMPLE COLOR CHART



NOTE: The colors depicted on this technical document may not illustrate the exact color. Contact a technical support representative for a more accurate color sample. Custom colors available upon request.

PHYSICAL PROPERTIES

(@ 73°F / 23°C, 7 day ambient cure as a coating)

PROPERTY	TEST	RESULT
VOC Content	N/A	0 g/l
Shore D Hardness	ASTM D-2240	77 to 81
Water Absorption (2hr boil)	ASTM D-570	0.12 %
Toxicity	N/A	None*
Heat Distortion Temperature	ASTM D-648	129 F / 54 C
Compressive Strength	ASTM D-695	12,100 psi
Tensile Strength	ASTM D-638	3,200 psi
Flexural Strength	ASTM D-790	4,600 psi
Abrasion Resistance **	ASTM D-4060	12 mg loss
Slant Shear	ASTM C-882	100% concrete failure
Flammability	ASTM D-635	Self-extinguishing
Flame Spread Rate (NFPA 101)	ASTM E-84	Class A
Elongation at Break	ASTM D-638	6.0 %
Chemical Resistance	Contact technical representative for chart	
Coefficient of Friction	Adjusted per requirement. Generally 0.50 to 0.80+	
COF Guidelines:	ADA Flat Surfaces	0.60
	ADA Inclined Surfaces	0.80
	OSHA	0.50
	NFPA	0.80

* FDA & USDA Acceptable

** CS-17 Wheel, 1 KG load, 1,000 cycles



elite crete systems

Elite Crete Systems, Inc.

1061 Transport Drive
Valparaiso, Indiana 46383

Phone: +1.219.465.7671 Fax: +1.219.531.0898

Toll Free: 888-323-4445

Email: info@elitecrete.com

www.elitecrete.com

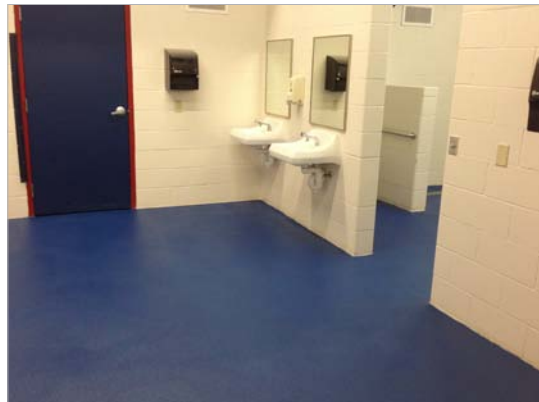
The information herein is general information to assist our customers in determining whether our products are suitable for their specific applications. Our products are intended for sale to commercial and industrial customers. We require that customers should inspect and test our products before use to satisfy themselves as to the content and suitability for the applications they intend to use our products for. Nothing herein shall constitute any warranty expressed or implied, including any warranty of merchantability or fitness for a particular purpose, nor is replacement of our materials and in no event shall we be liable for incidental or consequential damages.

HERMETIC™ Quartz

Flooring System



CSI Division 9: Finishes - Flooring



elite crete systems
Engineered High Performance Surfaces & Flooring

HERMETIC™ Quartz Floor is a high build, double broadcast system using colored quartz aggregate and sealed with a protective top coat.

TYPICAL AREAS OF USE

- Commercial kitchens
- Public restrooms
- Locker rooms
- Showrooms
- Wet or dry processing areas
- Grocery stores
- Airports
- Automobile service areas
- Medical
- Educational

ADVANTAGES

- Ease of maintenance
- Aesthetic improvements & decorative floor finish
- Increase slip resistance in wet areas
- Hard with excellent abrasion resistance
- VOC free – CA 01350 air quality compliant
- Excellent stain & chemical resistance
- Anti-microbial, seamless & hygienic
- Fast set available for quicker turn around time
- Wide array of color combinations

SPECIFICATION OVERVIEW

- Name: HERMETIC™ Quartz Floor
- Cured Thickness: @ 115 to 125 mils
- Surface preparation and detailed application instructions per manufacturer
- Manufacturer: Elite Crete Systems, Inc. +1-219-465-7671

SAMPLE COLOR CHART



QB-1001



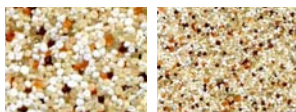
QB-1003



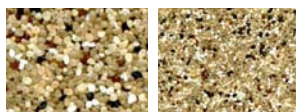
QB-1004



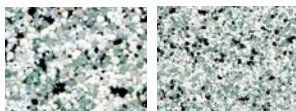
QB-1008



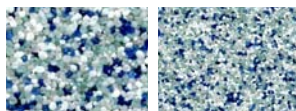
QB-1012



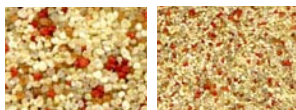
QB-1014



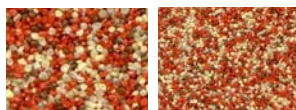
QB-1018



QB-1019



QB-1023



QB-1025

NOTE: The colors depicted on this technical document may not illustrate the exact color. Contact a technical support representative for a more accurate color sample. Custom colors available upon request.

PHYSICAL PROPERTIES

(@ 73°F / 23°C, 7 day ambient cure as a coating)

PROPERTY	TEST	RESULT
VOC Content	N/A	0 g/l
Shore D Hardness	ASTM D-2240	80 to 82
Water Absorption (2hr boil)	ASTM D-570	0.04 %
Toxicity	N/A	None*
Heat Distortion Temperature	ASTM D-648	128 F / 53 C
Compressive Strength	ASTM D-695	12,500 psi
Tensile Strength	ASTM D-638	3,300 psi
Flexural Strength	ASTM D-790	4,700 psi
Abrasion Resistance **	ASTM D-4060	17 mg loss
Slant Shear	ASTM C-882	100% concrete failure
Flammability	ASTM D-635	Self-extinguishing
Flame Spread Rate (NFPA 101)	ASTM E-84	Class A
Elongation at Break	ASTM D-638	4.2 %
Chemical Resistance	Contact technical representative for chart	
Coefficient of Friction	Adjusted per requirement. Generally 0.50 to 0.80+	
COF Guidelines:		
	ADA Flat Surfaces	0.60
	ADA Inclined Surfaces	0.80
	OSHA	0.50
	NFPA	0.68

* FDA & USDA Acceptable

** CS-17 Wheel, 1 KG load, 1,000 cycles



elite crete systems

Elite Crete Systems, Inc.

1061 Transport Drive
Valparaiso, Indiana 46383

Phone: +1.219.465.7671 Fax: +1.219.531.0898

Toll Free: 888-323-4445

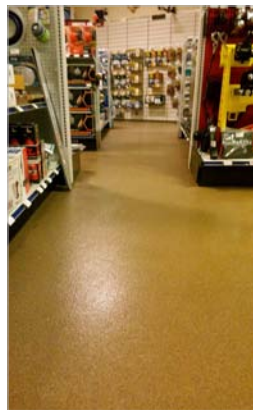
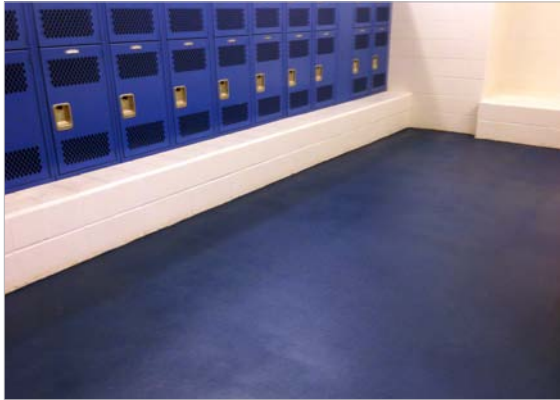
Email: info@elitecrete.com

www.elitecrete.com

The information herein is general information to assist our customers in determining whether our products are suitable for their specific applications. Our products are intended for sale to commercial and industrial customers. We require that customers should inspect and test our products before use to satisfy themselves as to the content and suitability for the applications they intend to use our products for. Nothing herein shall constitute any warranty expressed or implied, including any warranty of merchantability or fitness for a particular purpose, nor is replacement of our materials and in no event shall we be liable for incidental or consequential damages.

HERMETIC™ Stout

Flooring System



CSI Division 9: Finishes - Flooring

elite crete systems

Engineered High Performance Surfaces & Flooring

HERMETIC™ Stout Floor is a high build, double broadcast system using silica quartz aggregate and sealed with a pigmented top coat.

TYPICAL AREAS OF USE

- Commercial kitchens
- Public restrooms
- Locker rooms
- Wet or dry processing areas
- Automobile service areas
- Medical
- Educational
- Warehouses
- Manufacturing areas

ADVANTAGES

- Ease of maintenance
- Increased slip resistance in wet areas
- Hard with excellent abrasion resistance
- VOC free – CA 01350 air quality compliant
- Excellent stain & chemical resistant
- Anti-microbial, seamless & hygienic
- Fast set available for quicker turn around time
- Wide array of colors

SPECIFICATION OVERVIEW

- Name: HERMETIC™ Stout Floor
- Cured Thickness: @ 115 to 125 mils
- Surface preparation and detailed application instructions per manufacturer
- Manufacturer: Elite Crete Systems, Inc. +1-219-465-7671

SAMPLE COLOR CHART



NOTE: The colors depicted on this technical document may not illustrate the exact color. Contact a technical support representative for a more accurate color sample. Custom colors available upon request. *** Novalac Only**

PHYSICAL PROPERTIES

(@ 73°F / 23°C, 7 day ambient cure as a coating)

PROPERTY	TEST	RESULT
VOC Content	N/A	0 g/l
Shore D Hardness	ASTM D-2240	80 to 82
Water Absorption (2hr boil)	ASTM D-570	0.04 %
Toxicity	N/A	None*
Heat Distortion Temperature	ASTM D-648	128 F / 53 C
Compressive Strength	ASTM D-695	12,500 psi
Tensile Strength	ASTM D-638	3,300 psi
Flexural Strength	ASTM D-790	4,700 psi
Abrasion Resistance **	ASTM D-4060	17 mg loss
Slant Shear	ASTM C-882	100% concrete failure
Flammability	ASTM D-635	Self-extinguishing
Flame Spread Rate (NFPA 101)	ASTM E-84	Class A
Elongation at Break	ASTM D-638	4.2 %
Chemical Resistance	Contact technical representative for chart	
Coefficient of Friction	Adjusted per requirement. Generally 0.50 to 0.80+	
COF Guidelines:		
		ADA Flat Surfaces 0.60
		ADA Inclined Surfaces 0.80
		OSHA 0.50
		NFPA 0.68

* FDA & USDA Acceptable

** CS-17 Wheel, 1 KG load, 1,000 cycles



elite crete systems

Elite Crete Systems, Inc.

1061 Transport Drive
Valparaiso, Indiana 46383

Phone: +1.219.465.7671 Fax: +1.219.531.0898

Toll Free: 888-323-4445

Email: info@elitecrete.com

www.elitecrete.com

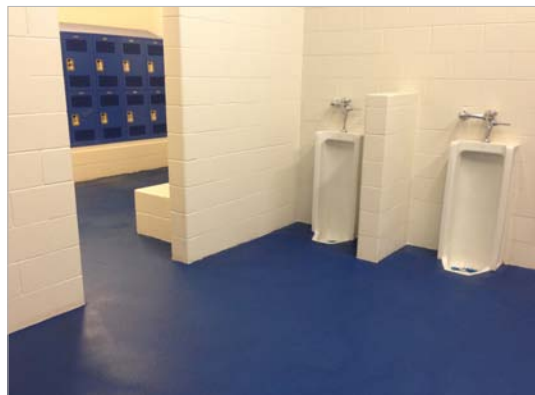
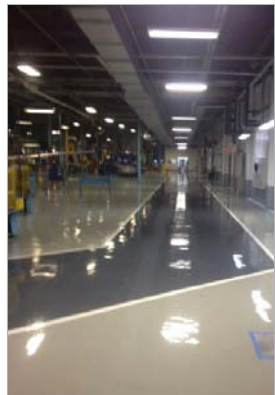
The information herein is general information to assist our customers in determining whether our products are suitable for their specific applications. Our products are intended for sale to commercial and industrial customers. We require that customers should inspect and test our products before use to satisfy themselves as to the content and suitability for the applications they intend to use our products for. Nothing herein shall constitute any warranty expressed or implied, including any warranty of merchantability or fitness for a particular purpose, nor is replacement of our materials and in no event shall we be liable for incidental or consequential damages.

HERMETIC™ Paramount

Flooring System



CSI Division 9: Finishes - Flooring



elite crete systems

Engineered High Performance Surfaces & Flooring

HERMETIC™ Paramount Floor is a high build, self leveling, resinous slurry flooring system engineered for industrial applications. Available in either solid pigment or colored quartz for a speckled finish.

TYPICAL AREAS OF USE

- Warehouses
- Manufacturing areas
- Laboratories & clean rooms
- Automotive service areas & garages
- Hospitals
- Schools
- Airports
- Shopping malls

ADVANTAGES

- Ease of maintenance
- Aesthetic improvements
- Increases the strength of the substrate
- Hard and abrasion resistant
- VOC free – CA 01350 air quality compliant
- Stain and chemical resistant
- Anti-microbial
- Fast set available for quicker turn around time

SPECIFICATION OVERVIEW

- Name: HERMETIC™ Paramount Floor
- Cured Thickness: @ 125 to 135 mils
- Surface preparation and detailed application instructions per manufacturer
- Manufacturer: Elite Crete Systems, Inc. +1-219-465-7671

SAMPLE COLOR CHART



NOTE: The colors depicted on this technical document may not illustrate the exact color. Contact a technical support representative for a more accurate color sample. Custom colors available upon request. ***Novalac Only**

PHYSICAL PROPERTIES

(@ 73°F / 23°C, 7 day ambient cure as a coating)

PROPERTY	TEST	RESULT
VOC Content	N/A	0 g/l
Shore D Hardness	ASTM D-2240	80
Water Absorption (2hr boil)	ASTM D-570	0.10 %
Toxicity	N/A	None*
Heat Distortion Temperature	ASTM D-648	128 F / 51 C
Compressive Strength	ASTM D-695	12,500 psi
Tensile Strength	ASTM D-638	3,300 psi
Flexural Strength	ASTM D-790	4,200 psi
Abrasion Resistance **	ASTM D-4060	9 mg loss
Slant Shear	ASTM C-882	100% concrete failure
Flammability	ASTM D-635	Self-extinguishing
Flame Spread Rate (NFPA 101)	ASTM E-84	Class A
Elongation at Break	ASTM D-638	5.5 %
Chemical Resistance	Contact technical representative for chart	
Coefficient of Friction	Adjusted per requirement. Generally 0.80+	
COF Guidelines:	ADA Flat Surfaces	0.60
	ADA Inclined Surfaces	0.80
	OSHA	0.50
	NFPA	0.68

* FDA & USDA Acceptable

** CS-17 Wheel, 1 KG load, 1,000 cycles



elite crete systems

Elite Crete Systems, Inc.

1061 Transport Drive
Valparaiso, Indiana 46383

Phone: +1.219.465.7671

Fax: +1.219.531.0898

Toll Free: 888-323-4445

Email: info@elitecrete.com

www.elitecrete.com

The information herein is general information to assist our customers in determining whether our products are suitable for their specific applications. Our products are intended for sale to commercial and industrial customers. We require that customers should inspect and test our products before use to satisfy themselves as to the content and suitability for the applications they intend to use our products for. Nothing herein shall constitute any warranty expressed or implied, including any warranty of merchantability or fitness for a particular purpose, nor is replacement of our materials and in no event shall we be liable for incidental or consequential damages.

HERMETIC™ Paramount HD

Flooring System



CSI Division 9: Finishes - Flooring

elite crete systems

Engineered High Performance Surfaces & Flooring

HERMETIC™ Paramount HD Floor is a high build, heavy duty, trowel applied resinous mortar flooring system engineered for industrial applications. Formulated for extreme abrasion, wear and chemical resistance.

TYPICAL AREAS OF USE

- Warehouses
- Manufacturing areas
- Automotive service areas
- High & heavy traffic areas
- Concrete floor restoration

ADVANTAGES

- Ease of maintenance
- Aesthetic improvements
- Increases the surface strength of the substrate
- Hard and abrasion resistant
- VOC free – CA 01350 air quality compliant
- Stain and chemical resistant
- Fast set available for quicker turn around time

SPECIFICATION OVERVIEW

- Name: HERMETIC™ Paramount HD Floor
- Cured Thickness: @ 225 to 250 mils
- Surface preparation and detailed application instructions per manufacturer
- Manufacturer: Elite Crete Systems, Inc. +1-219-465-7671

SAMPLE COLOR CHART



NOTE: The colors depicted on this technical document may not illustrate the exact color. Contact a technical support representative for a more accurate color sample. Custom colors available upon request. ***Novalac Only**

PHYSICAL PROPERTIES

(@ 73°F / 23°C, 7 day ambient cure as a coating)

PROPERTY	TEST	RESULT
VOC Content	N/A	0 g/l
Shore D Hardness	ASTM D-2240	83 to 85
Water Absorption (2hr boil)	ASTM D-570	0.10 %
Toxicity	N/A	None*
Heat Distortion Temperature	ASTM D-648	136 F / 54 C
Compressive Strength	ASTM D-695	14,500 psi
Tensile Strength	ASTM D-638	3,300 psi
Flexural Strength	ASTM D-790	4,400 psi
Abrasion Resistance **	ASTM D-4060	0.2 mg loss
Slant Shear	ASTM C-882	100% concrete failure
Flammability	ASTM D-635	Self-extinguishing
Flame Spread Rate (NFPA 101)	ASTM E-84	Class A
Elongation at Break	ASTM D-638	3.2 %
Chemical Resistance	Contact technical representative for chart	
Coefficient of Friction	Adjusted per requirement. Generally 0.80	
COF Guidelines:	ADA Flat Surfaces	0.60
	ADA Inclined Surfaces	0.80
	OSHA	0.50
	NFPA	0.68

* FDA & USDA Acceptable

** CS-17 Wheel, 1 KG load, 1,000 cycles



elite crete systems

Elite Crete Systems, Inc.

1061 Transport Drive
Valparaiso, Indiana 46383

Phone: +1.219.465.7671

Fax: +1.219.531.0898

Toll Free: 888-323-4445

Email: info@elitecrete.com

www.elitecrete.com

The information herein is general information to assist our customers in determining whether our products are suitable for their specific applications. Our products are intended for sale to commercial and industrial customers. We require that customers should inspect and test our products before use to satisfy themselves as to the content and suitability for the applications they intend to use our products for. Nothing herein shall constitute any warranty expressed or implied, including any warranty of merchantability or fitness for a particular purpose, nor is replacement of our materials and in no event shall we be liable for incidental or consequential damages.

Garage Floor Coatings



CSI Division 9: Finishes - Flooring

elite crete systems

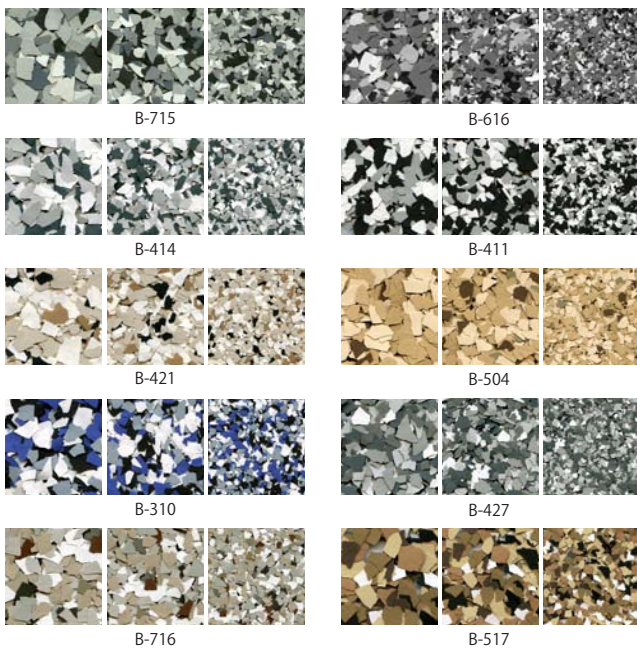
Engineered High Performance Surfaces & Flooring

Garage Floor Coatings are resinous or cementitious finishes engineered to improve the look of a garage while providing outstanding durability.

ADVANTAGES

- Ease of maintenance
- Protects the concrete substrate
- Aesthetic improvements
- Hard and abrasion resistant
- VOC free - CA 01350 air quality compliant
- Stain and chemical resistant
- Anti-microbial
- Satin or gloss finish
- Fast set available for quicker turn around time
- Wide selection of colors, patterns, and other options
- Custom logos available

SAMPLE FLAKE COLOR CHART



SAMPLE EPOXY COLOR CHART



NOTE: The colors depicted on this technical document may not illustrate the exact color. Contact a technical support representative for a more accurate color sample. Custom colors available upon request. *Novalac Only



elite crete systems

Elite Crete Systems, Inc.

1061 Transport Drive
Valparaiso, Indiana 46383

Phone: +1.219.465.7671 Fax: +1.219.531.0898

Toll Free: 888-323-4445

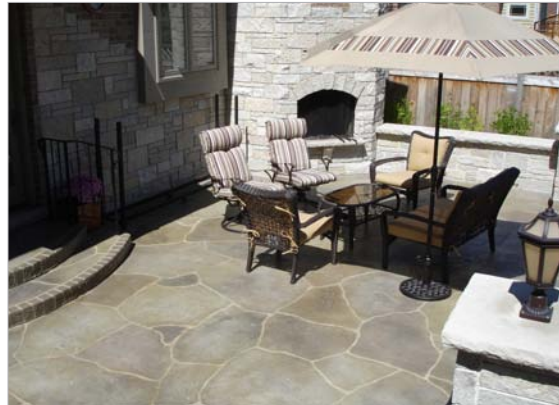
Email: info@elitecrete.com

www.elitecrete.com

The information herein is general information to assist our customers in determining whether our products are suitable for their specific applications. Our products are intended for sale to commercial and industrial customers. We require that customers should inspect and test our products before use to satisfy themselves as to the content and suitability for the applications they intend to use our products for. Nothing herein shall constitute any warranty expressed or implied, including any warranty of merchantability or fitness for a particular purpose, nor is replacement of our materials and in no event shall we be liable for incidental or consequential damages.

Exterior Decorative Concrete Finishes

CSI Division 3: Concrete - Decorative & Repair



elite crete systems

Engineered High Performance Surfaces & Flooring



Exterior Decorative Concrete Overlays are engineered to be a surface repair or an aesthetic finish that can be applied to new or existing concrete surfaces. The finished application is actually stronger than concrete and can withstand vehicular traffic and harsh temperatures (extreme hot or cold).

BENEFITS

- Virtually unlimited designs, patterns, textures and color options.
- Can create the authentic look and feel of any stone, brick, tile, wood and even just plain new concrete.
- Available in any color combination to match surrounding design.
- Cost effective compared to: full depth stamped concrete, pavers, brick, real stone or integrally colored concrete.
- Extreme durability for high traffic areas.
- Very low maintenance.
- Highly resistant to deicing salts, freeze/thaw climates, extreme heat, wet conditions and UV rays.
- Quick installation time.
- Can be installed pre or post construction.
- For new or existing concrete surfaces.



TECHNICAL DATA

PROPERTY	RESULT
Compressive Strength	
1 day	1320 to 1440 psi
7 days	3700 to 3920 psi
28 days	4730 to 4890 psi
Flexural Strength	
7 days	940 to 990 psi
28 days	1380 to 1490 psi
Tensile Strength	
7 days	320 to 380 psi
28 days	740 to 810 psi
Abrasion Loss	
Unsealed	0.17 to 0.21%
Density	
7 days	1.16 to 1.19 g/cm3
28 days	1.80 to 1.92 g/cm3
Shear Bond	
7 days	335 to 350 psi
28 days	560 to 585 psi
Cohesive Strength	
7 days	50 to 58 psi
28 days	95 to 102 psi
Impact Resistance	
7 days	15 to 17 inch/lbs.
28 days	28 to 32 inch/lbs.

Variance in results due to different applications and thickness.



elite crete systems

Elite Crete Systems, Inc.

1061 Transport Drive
Valparaiso, Indiana 46383

Phone: +1.219.465.7671 Fax: +1.219.531.0898

Toll Free: 888-323-4445

Email: info@elitecrete.com

www.elitecrete.com

The information herein is general information to assist our customers in determining whether our products are suitable for their specific applications. Our products are intended for sale to commercial and industrial customers. We require that customers should inspect and test our products before use to satisfy themselves as to the content and suitability for the applications they intend to use our products for. Nothing herein shall constitute any warranty expressed or implied, including any warranty of merchantability or fitness for a particular purpose, nor is replacement of our materials and in no event shall we be liable for incidental or consequential damages.

Pool Deck Coatings

CSI Division 3: Concrete - Decorative & Repair



elite crete systems

Engineered High Performance Surfaces & Flooring



Pool Deck Coatings are polymer modified to act as surface repair or an aesthetic finish that can be applied to new or existing concrete surfaces. The coating is actually stronger than concrete and can withstand vehicular traffic and harsh temperatures (extreme hot or cold).

BENEFITS

- Virtually unlimited designs, patterns, textures and color options.
- Non-slip even when wet.
- Can create the authentic look and feel of any stone, brick, tile, wood and even just plain new concrete.
- Available in any color combination to match surrounding design.
- Cost effective compared to: full depth stamped concrete, pavers, brick, real stone or integrally colored concrete.
- Extreme durability for high traffic areas.
- Very low maintenance.
- Highly resistant to deicing salts, freeze/thaw climates, extreme heat, wet conditions and UV rays.
- Quick installation time.
- Can be installed pre or post construction.
- For new or existing concrete surfaces.



TECHNICAL DATA

PROPERTY	RESULT
Compressive Strength	
1 day	1320 to 1440 psi
7 days	3700 to 3920 psi
28 days	4730 to 4890 psi
Flexural Strength	
7 days	940 to 990 psi
28 days	1380 to 1490 psi
Tensile Strength	
7 days	320 to 380 psi
28 days	740 to 810 psi
Abrasion Loss	
Unsealed	0.17 to 0.21%
Density	
7 days	1.16 to 1.19 g/cm3
28 days	1.80 to 1.92 g/cm3
Shear Bond	
7 days	335 to 350 psi
28 days	560 to 585 psi
Cohesive Strength	
7 days	50 to 58 psi
28 days	95 to 102 psi
Impact Resistance	
7 days	15 to 17 inch/lbs.
28 days	28 to 32 inch/lbs.

Variance in results due to different applications and thickness.



elite crete systems

Elite Crete Systems, Inc.

1061 Transport Drive
Valparaiso, Indiana 46383

Phone: +1.219.465.7671 Fax: +1.219.531.0898
Toll Free: 888-323-4445
Email: info@elitecrete.com

www.elitecrete.com

The information herein is general information to assist our customers in determining whether our products are suitable for their specific applications. Our products are intended for sale to commercial and industrial customers. We require that customers should inspect and test our products before use to satisfy themselves as to the content and suitability for the applications they intend to use our products for. Nothing herein shall constitute any warranty expressed or implied, including any warranty of merchantability or fitness for a particular purpose, nor is replacement of our materials and in no event shall we be liable for incidental or consequential damages.

HERMETIC™ Aircraft

Flooring System



CSI Division 9: Finishes - Flooring

elite crete systems

Engineered High Performance Surfaces & Flooring

HERMETIC™ Aircraft Floor is a high performance, self leveling, resinous coating engineered for aircraft hangars and specialty aerospace floors. This floor exhibits exceptional resistance to chemicals common in such environments including Skydrol fluids.

ADVANTAGES

- Ease of maintenance
- Protects the substrate
- Aesthetic improvements
- Increases the strength of the substrate
- Hard and abrasion resistant
- Light reflective finish
- VOC free – CA 01350 air quality compliant
- Stain and chemical resistant
- Variable degree of slip resistance depending on requirements
- Anti-microbial
- Satin or gloss finish
- Fast set available for quicker turn around time

SPECIFICATION OVERVIEW

- Name: HERMETIC™ Aircraft Floor
- Finish: Gloss or satin
- Cured Thickness: @ 45 to 90 mils
- Surface preparation and detailed application instructions per manufacturer
- Manufacturer: Elite Crete Systems, Inc. +1-219-465-7671

SAMPLE COLOR CHART



NOTE: The colors depicted on this technical document may not illustrate the exact color. Contact a technical support representative for a more accurate color sample. Custom colors available upon request. * Novalac Only

PHYSICAL PROPERTIES

(@ 73°F / 23°C, 7 day ambient cure as a coating)

PROPERTY	TEST	RESULT
VOC Content	N/A	0 g/l
Shore D Hardness	ASTM D-2240	80
Water Absorption (2hr boil)	ASTM D-570	0.03 %
Toxicity	N/A	None*
Heat Distortion Temperature	ASTM D-648	130 F / 55 C
Compressive Strength	ASTM D-695	12,300 psi
Tensile Strength	ASTM D-638	3,200 psi
Flexural Strength	ASTM D-790	4,800 psi
Abrasion Resistance **	ASTM D-4060	9 mg loss
Slant Shear	ASTM C-882	100% concrete failure
Flammability	ASTM D-635	Self-extinguishing
Flame Spread Rate (NFPA 101)	ASTM E-84	Class A
Elongation at Break	ASTM D-638	6.5 %
Chemical Resistance	Contact technical representative for chart	
Coefficient of Friction	Adjusted per requirement. Generally 0.50 to 0.80	
COF Guidelines:	ADA Flat Surfaces	0.60
	ADA Inclined Surfaces	0.80
	OSHA	0.50
	NFPA	0.68

* FDA & USDA Acceptable

** CS-17 Wheel, 1 KG load, 1,000 cycles



elite crete systems

Elite Crete Systems, Inc.

1061 Transport Drive
Valparaiso, Indiana 46383

Phone: +1.219.465.7671 Fax: +1.219.531.0898

Toll Free: 888-323-4445

Email: info@elitecrete.com

www.elitecrete.com

The information herein is general information to assist our customers in determining whether our products are suitable for their specific applications. Our products are intended for sale to commercial and industrial customers. We require that customers should inspect and test our products before use to satisfy themselves as to the content and suitability for the applications they intend to use our products for. Nothing herein shall constitute any warranty expressed or implied, including any warranty of merchantability or fitness for a particular purpose, nor is replacement of our materials and in no event shall we be liable for incidental or consequential damages.